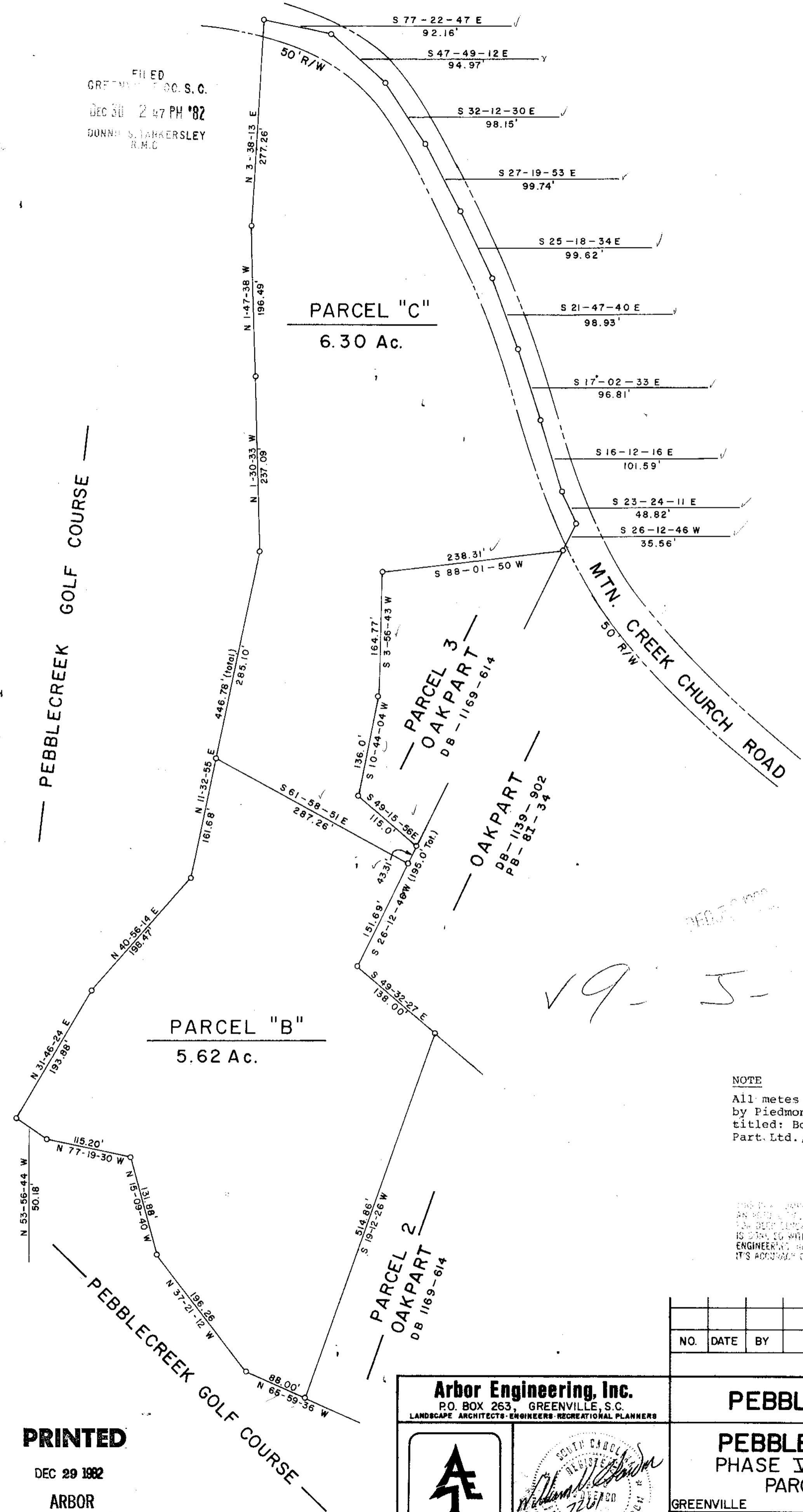
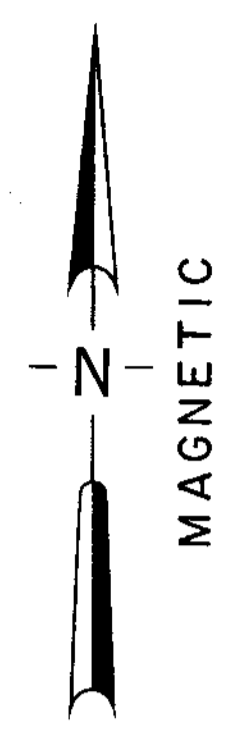


FILED
GREENVILLE, S.C.
DEC 30 2 47 PM '82
DUNN & SAUNDERS
R.M.C.



16034

19-5-29

16034

NOTE
All metes and bounds taken from plat by Piedmont Architects and Engineers, titled: Boundary and Topo for Pebble Part. Ltd., dated, March 19, 1980.

THIS PLAN WAS PREPARED BY ME OR UNDER MY CLOSE PERSONAL SUPERVISION AND I AM A LICENSED PROFESSIONAL ENGINEER IN THE STATE OF SOUTH CAROLINA. I HEREBY CERTIFY THAT THE INFORMATION CONTAINED HEREIN IS TRUE AND CORRECT TO THE BEST OF MY KNOWLEDGE AND BELIEF. I AM NOT PROVIDING ANY GUARANTEE OR WARRANTY FOR ITS ACCURACY OR ADEQUACY.

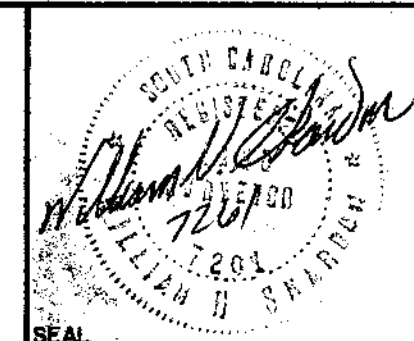
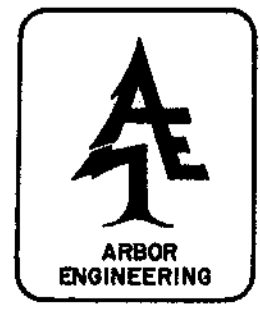
NO.	DATE	BY	DESCRIPTION	APPR.
REVISIONS				

PEBBLEPART LTD.

PEBBLECREEK P.U.D.
PHASE VII SECTION II
PARCELS "B" & "C"

DRAWN		DESIGN		CHECK		DATE	
WNS		CJR		CJR		29 DEC 1982	
SCALE 1"=100'		FILE		DWG. NO.		82112	

Arbor Engineering, Inc.
P.O. BOX 263, GREENVILLE, S.C.
LANDSCAPE ARCHITECTS-ENGINEERS-RECREATIONAL PLANNERS



PRINTED

DEC 29 1982

ARBOR ENGINEERING, INC.

641 28 00 2